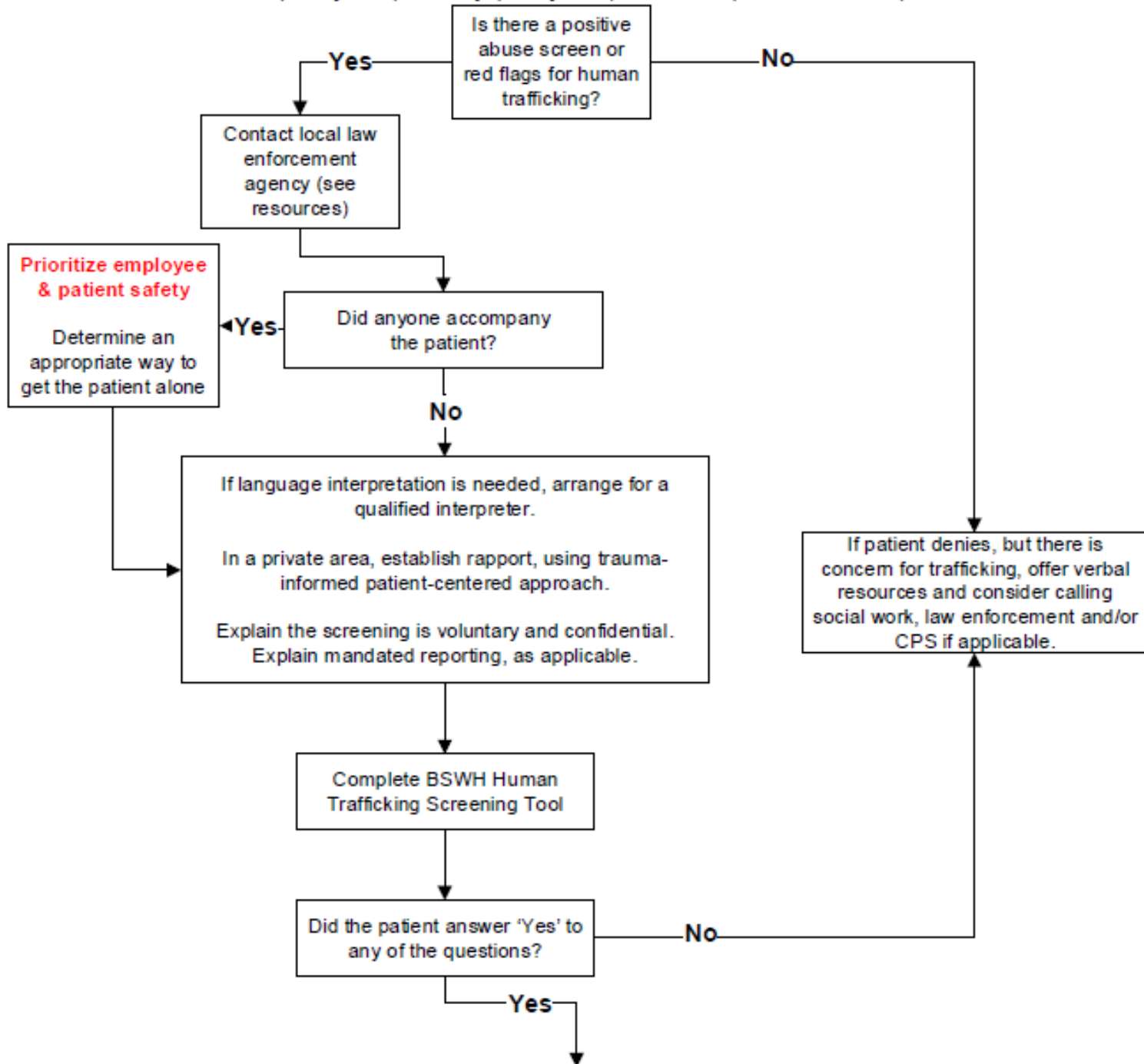


# Vulnerable Populations Human Trafficking Algorithm

Pediatric (<18 years); elderly (≥65 years); disabled (Code 48.002-8)



## RESOURCES

- Consult **Social Work**, if available.
- Collect sexual assault evidence kit if acute sexual assault has occurred.
- Offer local **human trafficking advocate** for safety planning & immediate needs.
- Contact **local law enforcement agency**.
- Contact the **Department of Family Protective Services Hotline** if the victim is unsafe with their family or caregivers at 1-800-252-5400. (HOTLINE)
- Contact **National Human Trafficking Hotline** at 1-888-373-7888.